



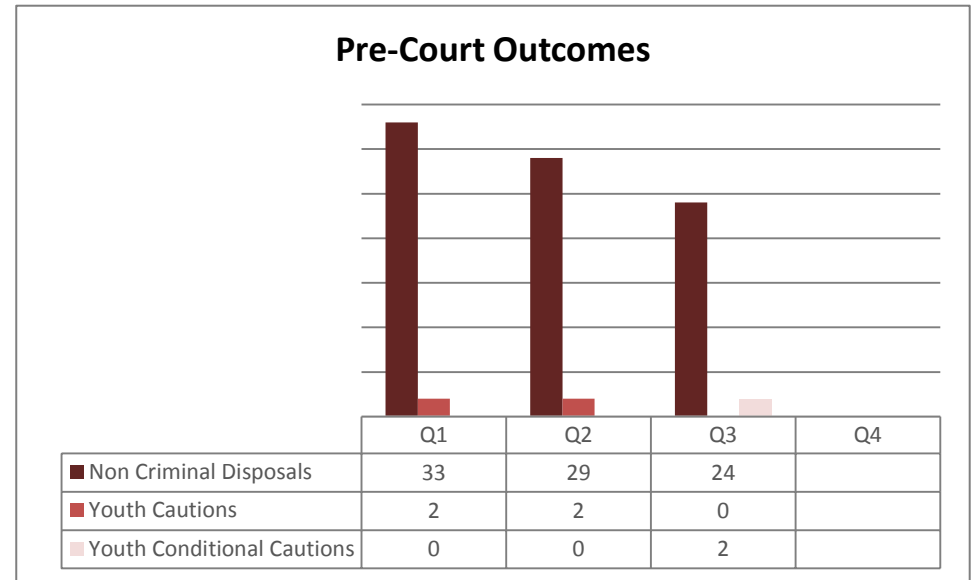
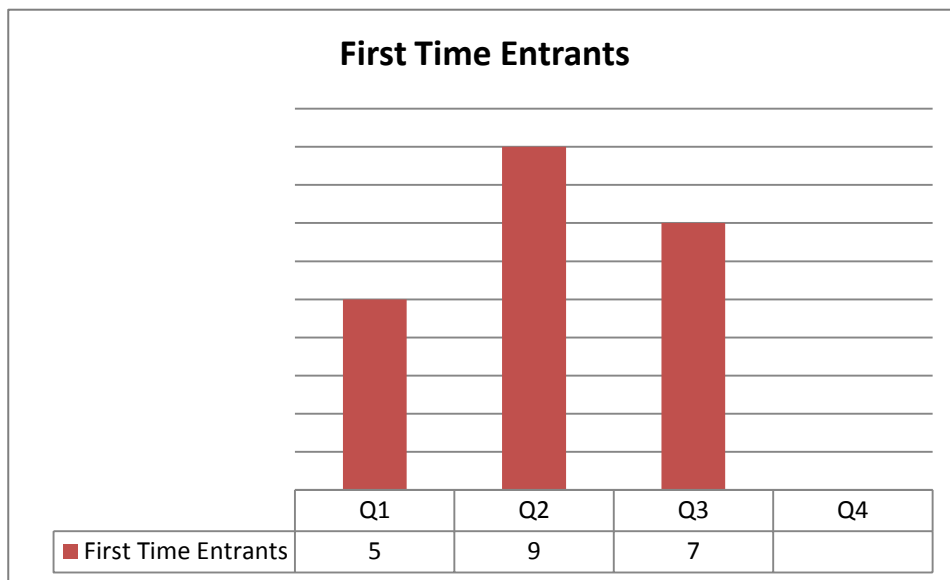
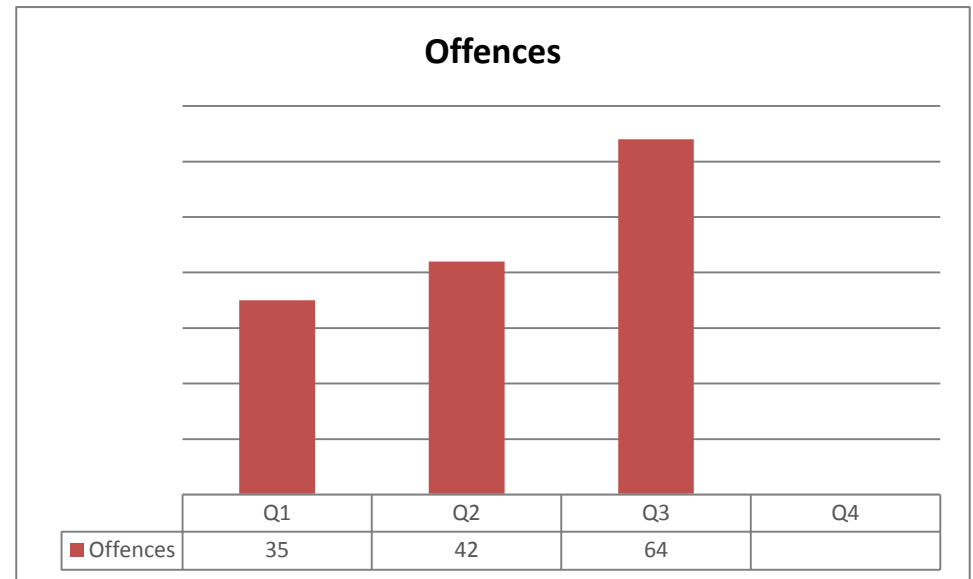
Child & Family Services Performance Report

Quarterly Supplement
Quarter 3 – 2017/18

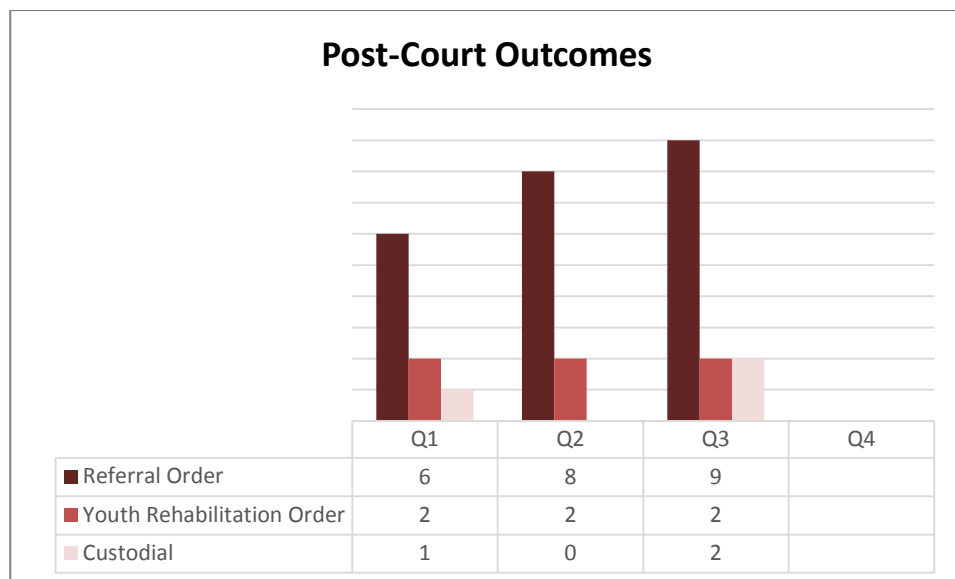
v1



Youth Offending Service – Q3 2017/18



Youth Offending Service – Q3 2017/18

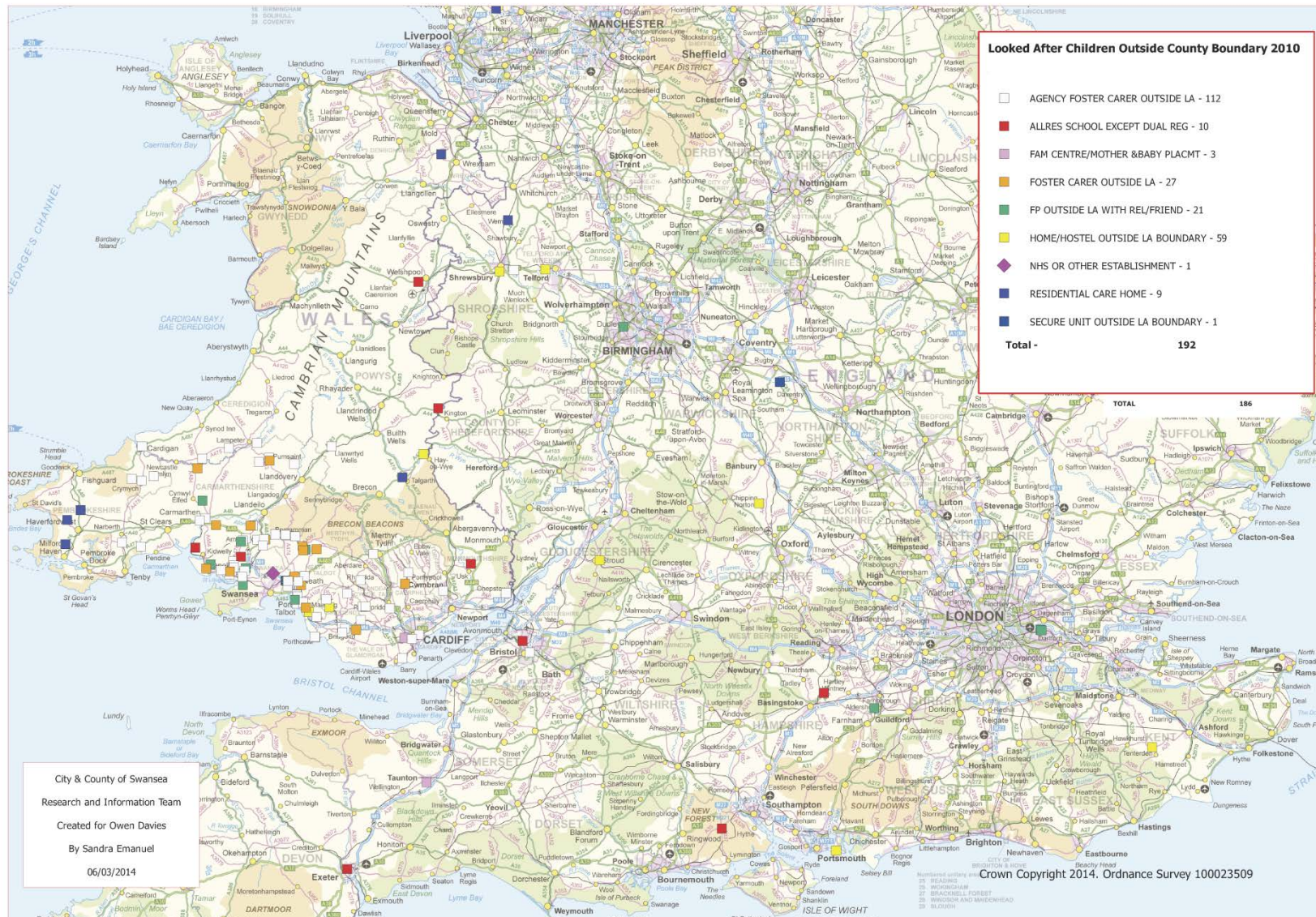


In 2015-16 Swansea had a total of 8 custodial sentences, we are half way through the year with only 1 and we are hopeful that this work to prevent custodial sentences continues until the end of the year.

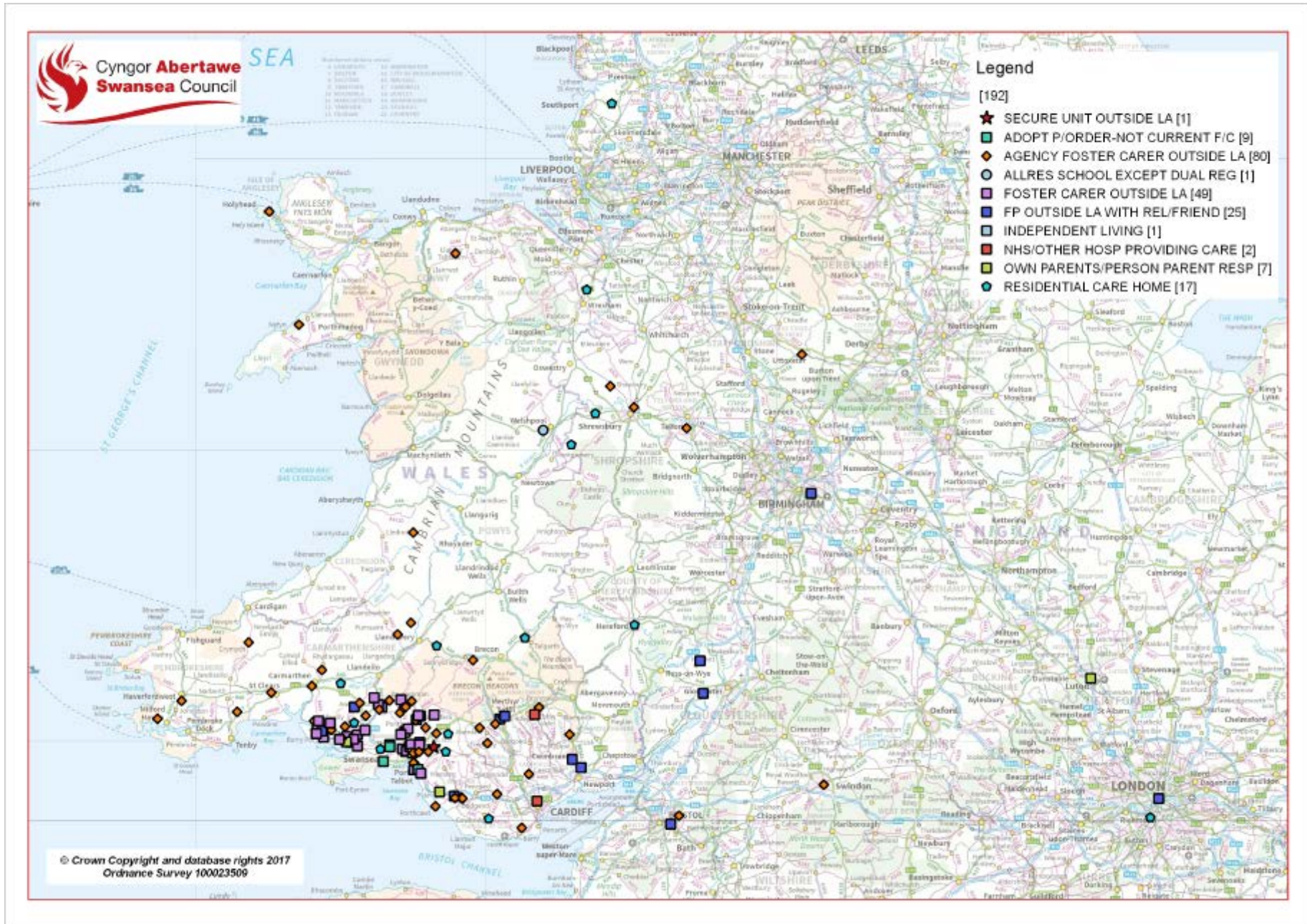
The use of custody is addressed by offering the court robust alternatives and the on-going work to reduce the risk young people pose to others.

Type of offence (Q3) 2017/18	(Q3) 2017/18
ARSON	1
BREACH OF BAIL	6
BREACH OF CONDITIONAL DISCHARGE	0
BREACH OF STATUTORY ORDER	6
CRIMINAL DAMAGE	17
DOMESTIC BURGLARY	1
DRUGS OFFENCE	3
FRAUD AND FORGERY	0
MOTORING OFFENCES	19
NON DOMESTIC BURGLARY	0
OTHER	0
PUBLIC ORDER	15
RACIALLY AGGRAVATED	1
ROBBERY	10
SEXUAL OFFENCE	3
THEFT AND HANDLING	12
VEHICLE THEFT	16
VIOLENCE AGAINST THE PERSON	31

Placement of LAC – All LAC Children Q4 2010



Placement of LAC – All LAC Children Q3 2017/18



Corporate Reporting Measures – Child & Family Services

2016/17				2017/18			
Qtr1	Qtr2	Qtr3	Qtr4	Qtr1	Qtr2	Qtr3	Qtr4

PI Ref

PI Description

CFS14

The percentage of decisions about a referral for care and support received by Child and Family Services which are taken within 24 hrs from receipt of referral

Data - (N)	508	404	408	456	555	410	410	
Data - (D)	508	404	408	456	555	410	411	
Target	100%	100%	100%	100%	100%	100%	100%	100%
Result	100%	100%	100%	100%	100%	100%	100%	

CFS16

The percentage of initial core group meetings held within 10 working days of the initial child protection conference

Data - (N)	60	67	116	104	95	98	96	
Data - (D)	64	70	130	121	107	118	105	
Target	90%	90%	90%	90%	90%	91%	92%	95%
Result	93.75%	95.71%	89.23%	85.95%	88.79%	83.05%	91.43%	

2016/17				2017/18			
Qtr1	Qtr2	Qtr3	Qtr4	Qtr1	Qtr2	Qtr3	Qtr4

PI Ref

PI Description

CFS18

The number of children looked after per 10,000 of the 0-17 Swansea population

Data - (N)	496	492	473	481	492	478	502	
Data - (D)	47838	47838	47026	47026	47026	47026	47026	
Target	NEW	NEW	NEW	NEW	110	108	100	
Result	103.68	102.85	100.58	102.28	104.62	101.65	106.75	

CFS 19

The number of children on the Local Authority's Child Protection Register per 10,000 of the 0-17 Swansea population

Data - (N)	206	212	250	252	255	274	265	
Data - (D)	47838	47838	47026	47026	47026	47026	47026	
Target	NEW	NEW	NEW	NEW	55	54	53	53
Result	43.06	44.32	53.16	53.59	54.23	58.27	56.35	

2016/17				2017/18			
Qtr1	Qtr2	Qtr3	Qtr4	Qtr1	Qtr2	Qtr3	Qtr4

PI Ref

PI Description

CFS20

The number of children in need of care and support per 10,000 of the 0-17 Swansea population

Data - (N)

1039	1034	1008	995	1112	1000	994	
47838	47838	47026	47026	47026	47026	47026	
NEW	NEW	NEW	NEW	230	220	205	190
217.19	216.15	214.35	211.59	236.46	212.65	211.37	

Data - (D)

Target



Result

CFS21

Percentage of all statutory indicators for Child & Family Services that have maintained or improved performance from the previous year

Data - (N)

New	New	New	New	4	3	1	
-	-	-	-	5	5	5	
-	-	-	-	80%	80%	80%	80%
-	-	-	-	80%	60%	20.00%	

Data - (D)

Target



Result

2016/17				2017/18			
Qtr1	Qtr2	Qtr3	Qtr4	Qtr1	Qtr2	Qtr3	Qtr4

PI Ref

PI Description

Measure 24

The percentage of assessments completed for children within statutory timescales

Data - (N)	229	288	251	273	250	272	194	
Data - (D)	236	358	318	351	328	390	279	
Target	93%	93%	93%	93%	86%	87%	89%	90%
Result	97.03%	80.45%	78.93%	77.78%	76.22%	70.00%	69.53%	

Measure 28

The average length of time for all children who were on the Child Protection Register (CPR) during the year

Data - (N)	16060	21092	18408	26578	22330	17372	22962	
Data - (D)	68	85	78	125	112	91	109	
Target	365	365	365	365	100-300	100-300	100-300	100-300
Result	236	248	236	213	199	191	211	

Western Bay Adoption – Quarter 3 2017/18

1. Number of Children Referred	
Quarter 3 2017/18	65
2016/17 year end data	55
2. Number of PO Granted	
Quarter 3 2017/18	14
2016/17 year end data	53
3. Number of children matched	
Quarter 3 2017/18	24
2016/17 year end data	32
4. Number of Children Placed	
Quarter 3 2017/18	25
2016/17 year end data	30
5. Number of Children waiting to be Matched (family finding)	
Current	21
Potential Links identified	4
Potential Matches identified	3
Still searching	10
Consideration being given to change of plan	4

5. Number of Adoption Orders Granted	
Year to Date	26
2016/17 year end data	28
6. Number of Children in Adoptive P'ment where AOG not yet granted	
Monthly	26
2016/17 year end data	28
7. Number of Children placed outside of region	
Year to date	10
2016/17 year end data	15
8. Number of Children Placed with WBAS Adopters	
Year to Date	15
2016/17 year end data	15
9. Number of Placement Breakdowns(post AOG) & Disruptions (pre AOG)	
Monthly disruptions	0
year to Date	0
2016/17 year end data	0
Monthly breakdowns	0
Year to Date	0
2016/17 year end data	0